

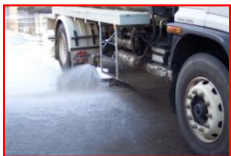


HIGH WATER PRESSURE ROAD FLUSHERS

Designed for road flushing using high water pressure

Facilities as Follows;

- Mild & stainless steel tanks.
- Auxiliary engine, transmission, PTO or engine live drive pump operation .
- Front & rear flushers.
- Front spray bar.
- Rear spray bar
- Full Cabin Control.
- Hydraulic Rewind Reel.
- High pressure water pumps.



Need service or spare parts on your existing Flocon products?

Our qualified service or spare parts technicians can help

Phone: (03) 9703 2891



Contact Peter Knight at Flocon for more information

Phone: (03) 9703 2777 or Fax: 9703 2933

Email: peter@flocon.com.au

Victoria, New South Wales, Queensland, South Australia, Western Australia & Tasmania

Product Information